

Pentwater Lake Association Newsletter

November 2023

IN THIS ISSUE

Committee News	2-3
Cross Country Ski Trails	3
DNR Fish Stocking	4
Youth Fishing Tournament	5
Riparian Fall Lake Duties	6
News Bytes	7
Calendar Next Quarter	8
Event Highlights	9
Pentwater School Page	10
Membership Page	11
Groundwater Concerns	12

President's Message: Patrick Hooyman

Clarifying PLA and PLIB

Questions continue to surface regarding the difference between the Lake Association and Lake Improvement Board.

The relationship between your Pentwater Lake Association (PLA) and the Pentwater Lake Improvement Board (PLIB) is a topic that needs to be explained in straight forward terms.

The Pentwater Lake Association, a non-profit formed in 1995, is a volunteer community organization for the Pentwater Lake area that is controlled by its members. Its mission from our by-laws includes promoting a community feeling among residents, the maintenance and improvements of the quality of the environment, the furtherance of public health, safety and welfare of residents, the cooperation of all citizens with governmental units affecting the area and cooperation by those units among themselves. The PLA is funded through membership fees and fund-raising activities and gets no tax money of any kind. Our volunteer activities are many as can be seen in our newsletters. PLA volunteers are active with issues of the complete lake system- watershed, lake, shoreland and channel.

The Pentwater Lake Improvement Board was formed in 1999 by the Pentwater Township Board in response to concerns about the condition (in particular weed control) of Pentwater Lake. It is organized and operates under the provisions of the Michigan Natural Resources and Environmental Protection Act and is a government entity. The composition of the Lake Board is stipulated by legislation. It includes representatives of Pentwater Township, the Village of Pentwater, the Drain Commissioner, our County Commissioner, the Michigan DEQ and a riparian property owner - six members. The PLIB has taxing authority and created a special assessment district taxing the property owners located in the district (riparian lots and lots adjacent to riparian lots) for the cost of a lake management plan which is updated every five years.

There is no overlap of the PLA and the PLIB; rather they complement each other. The PLA monitors the PLIB and advocates our members' concerns to the PLIB for the "Love of the Lake." The PLIB funds actions which address our members' concerns in the PLIB lake management plan. Hopefully this explanation dispels any confusion our membership and other community residents may have had about these important organizations.



COMMITTEE NEWS

SOCIAL by Lynne Cavazos

Pentwater Lake Association Strawberry Shortcake Social:

The 2023 PLA Strawberry Social took place on Thursday, August 10, 2023 during the Homecoming Celebration in Pentwater. The Social was the best ever!

Many visitors and residents came to the Village Green and enjoyed our tasty strawberry shortcake while listening the music and joyful antics provided by the ever-popular Clown Band from Scottville & the Village Civic Band. We appreciated the donation of “strawberry stickers” from Jody and Dan TerHaar – they made the event even more memorable.

A special Thank You to Caroline Denlar for scheduling the many PLA members who volunteered to make and sell the shortcakes and also assist with set-up and clean-up.

We sold over 550 shortcakes and bottled water. Our net profit for our only fundraiser for the year was \$1,554.

MEMBERSHIP by Rich Pugsley

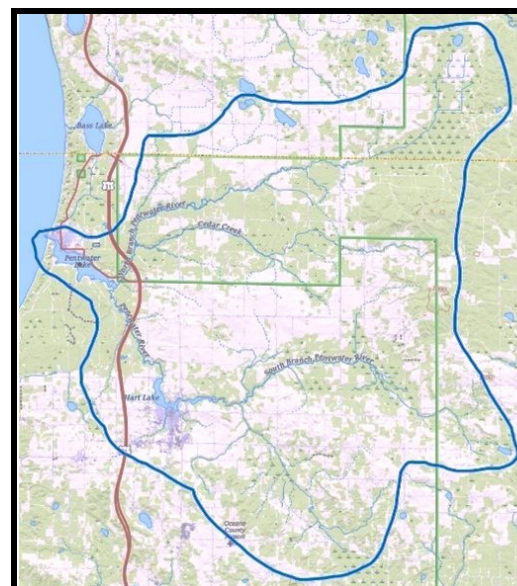
The opportunity to renew your Membership for the 23/24 Association year will end this month. To be included in and receive the new Directory and future newsletters, your dues must be current. We currently stand at 198 renewed members with 1 new member this month.

Membership applications can be downloaded from the PLA website.

<https://www.pentwaterlakeassociation.com/membership-application>

We would like to welcome Michael and Lynn Smith as new members.

Map of Pentwater Watershed (right): Red line represents US 31 and blue line represents watershed boundaries



WATERSHED by Rich Pugsley

Check out the updated Pentwater Watershed page on the PLA website. Thanks to Beth Provencal for her work to create this. <https://www.pentwaterlakeassociation.com/pentwaterwatershed>

The next activity for the Watershed Committee is the household survey. Information from the survey will be used to guide the technical and educational conservation efforts to improve the water quality, use, and habitats for the people, wildlife, and fish in the watershed.

The committee has been working with Associate Professor Amanda Buday from Grand Valley State University (GVSU) Social Sciences Lab to design and conduct the mail survey. The plan is to distribute the survey in November. Of the 6,000 households in the Pentwater Watershed the survey will be sent to a random selection of 850 households. The results will be available in the spring.

If you received a letter from GVSU, please pay attention to it. Your response to the survey will be very helpful for us.

Our appreciation to Fly Fishers International, the Oceana County Community Foundation and private citizens who have contributed funds to cover the cost of the survey.



WATER QUALITY by Pat Hooyman

- 1) Lake and River Samples were taken on September 14 and delivered to GVSU Annis lab for analysis. Frozen Chlorophyll and Phosphorous samples were also delivered to EGLE Lab September 19 on schedule.
- 2) E.coli measurements made in several areas. We should have complete ANNIS E. coli source reports for all samples by the end of October. Current results show that ANNIS detected HF183 (human marker) at 104th and 96th in the watershed, but not in the Village Creek. That's good news for the lake and village. Results, when final, will be sent to EGLE, District 10 Health Department, Township, Village and County authorities.

SOCIAL MEDIA by Beth Provencal

PLA Website: With help from Kathy O'Connor and Rich Pugsley, a page for the Watershed Committee was added. This was done with space for pages and links. Working on adding photos with a goal to be completed by October 31.

PLA Facebook: Posted photos and information about the September 22, 2023 Educational Pontoon excursion, headed by Tom and Joe in regards to both the shoreline and identifying native vs. invasive growth. This excursion was very helpful in understanding our Pentwater Lake shoreline and the Board hopes to offer these educational lake tours to PLA members several times next year. (See photo to the right.)

NATURAL RESOURCES by Joe Primozich



There have been daily sightings of varied wildlife on the south side of the lake. Large groups of deer and turkeys have been crossing Chester and feasting in multiple locations. An 8-point buck was spotted in the Bushes' front yard one evening. A gray fox has been seen trotting down Suffolk and Chester Streets. A mink has also been frequenting the waterfront properties on the end of Chester. (Photo to the left is courtesy of Judy Coburn's daughter, Kathy.) A few years ago an entire family of minks lived on Chester and this is the first time since then that one has been seen. The eagles are both seen and heard.



Local Cross Country Ski Trails...Year-round Recreation Treasure by Ellen Lightle

Even without snow, the Oceana Cross Country Ski Association's two trail systems can be enjoyed year-round! The **Pentwater Pathways** is a system of trails, easy to difficult in length and terrain, in the state forest located off Railroad Ave. near the intersection of Longbridge and Ridge Roads, south of Pentwater. **Crystal Valley**, northeast of Pentwater in the Manistee National Forest, offers even more miles of varying duration and challenge.

Both areas are great for hiking. Also, in the fall, volunteers are welcome to participate in weekly work-bees. During the winter, OCCSA maintains and grooms both trail systems. In addition, the all-volunteer group offers public ski events as well as the school kids' program for all four public school districts in the county.

For more information about trail locations, maps, volunteer opportunities, and membership, check out the website www.oceanaski.org.

Fishing opportunities abound, with more than 9 million fish stocked so far in 2023

September 21, 2023 (Michigan Lakes and Streams Association) Contact: [Jeremiah Blaauw](#), 906-235-7679

More than 269 tons of fish, eight different species, plus one hybrid, and a total of 9,335,410 individual fish – it all adds up to successful spring and summer stocking efforts by the Michigan Department of Natural Resources, and some great fall fishing for anglers.

Stocking is no small task. Over the course of 2,233 hours and more than 89,000 miles, DNR fisheries crews in 17 specialized trucks took 375 trips to stock fish at 705 different sites.

"We had excellent spring and summer stocking seasons that will bring significant benefits and fishing opportunities to Michigan anglers," said Ed Eisch, DNR fish production manager. "With the hard work and dedication of our staff, healthy, high-quality fish were reared and delivered to stocking sites in excellent condition. The numbers produced and stocked were right on target for most areas."

The number and type of fish produced varies by hatchery, as each location's ability to rear fish depends on the source and temperature of the rearing water. In Michigan there are six state and two cooperative hatcheries that work together to produce the species, strain and size of fish needed for fisheries managers. These fish must then be delivered and stocked at a specific time and location to ensure their success. The hatcheries are:

- **Marquette State Fish Hatchery (near Marquette)**
- **Thompson State Fish Hatchery (near Manistique)**
- **Oden State Fish Hatchery (near Petoskey)**
- **Harrietta State Fish Hatchery (in Harrietta)**
- **Platte River State Fish Hatchery (near Honor)**
- **Wolf Lake State Fish Hatchery (near Kalamazoo)**
- **A cooperative teaching hatchery at Lake Superior State University (in Sault Saint Marie)**

Included in this year's total fish stocked were 2.7 million walleye spring fingerlings, fish that were reared in ponds by the DNR and tribal partners with extensive support provided by local sporting organizations. These fish were stocked at 90 inland lakes and rivers and Lake Michigan.

Fish stocking is a critical DNR activity. These efforts help support a Great Lakes fishery valued at more than \$7 billion. Fish are reared in Michigan's state fish hatcheries anywhere from one month to 1 ½ years before they are stocked.

The public is welcome at any of Michigan's state fish hatcheries to see firsthand the fish rearing process. For more information, visit Michigan.gov/Hatcheries

DNR Fish Stocking truck



Pentwater Lake Youth Fishing Tournament Results 2023 – by Joe Primozich

The 6th annual Youth Fish Tournament results are in and prove to be encouraging. The first-place fish were caught in 12 categories. Three DNR Master Angler fish caught were in the Bowfin/Dogfish category. All three Master Anglers received trophies and sweatshirts acknowledging their success. The largest pike caught over the last 6 years was taken this summer and was 32" long. Other species that showed a close second were Large Mouth Bass and the Bullhead. The best catch of perch 9" to 12" could mainly have been due to only a handful of days for ice fishing this past winter because of thin ice and the warm weather. Not many perch were harvested this winter. The tournament winners came from as far away as Illinois, Indiana, New York, and France. About 80 youths participated. Below are this year's results. Great job to all who were involved.

Yellow Perch	12"	Jack Mulder
Rock Bass	8.5"	Noah Deboni
Large Mouth Bass	18.7"	Sam Meyerson
Pumpkinseed(sunfish)	8.4"	Emmy Carson
Bluegill	8"	Natalie Russell
Bullhead	13.3"	Lucas Small
Small Mouth Bass	16"	Lorelai Deland
Northern Pike	32"	Owen Mentheour
Crappie	12"	Brendan Nelson
Sheepshead	24.3"	Giovanni Ciucci
Carp	19"	Louise Mentheour
Bowfin/Dogfish (all three are Master Anglers, over 27")		
	27.5"	Ryan McGann
	28"	Avery Carson
	29"	Arica Russell



A Riparian's Fall Lake Duties by Joe Primozich

With falling temperatures, and snow, ice, and lake freezing forth coming, the following are suggestions to consider for your lake shoreline care.

LAWNS

- Don't use phosphate fertilizers on lake lawn fronts. Fertilizers enrich our lake algae blooms.
- Develop a healthy green plant buffer zone to absorb runoff in the last 35 feet before the lake. This reduces your lawn size and absorbs fertilizers before getting into the lake.
- Don't dump leaves, grass or animal waste into the lake. Set up a mulch pile.

SEPTIC SYSTEM

After a busy summer season run a check and maintain your septic system. Septic system over flows are suspected to be the main source of phosphorus leaching into the lake. This is the main cause for aging the lake or building up a mucky bottom.

VEGETATION

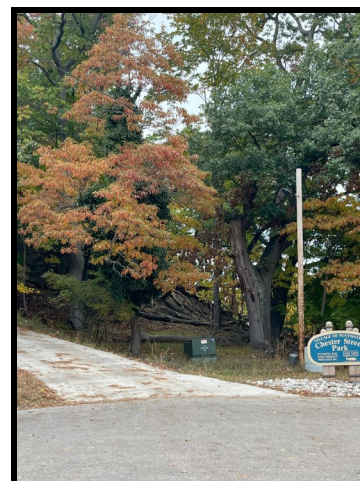
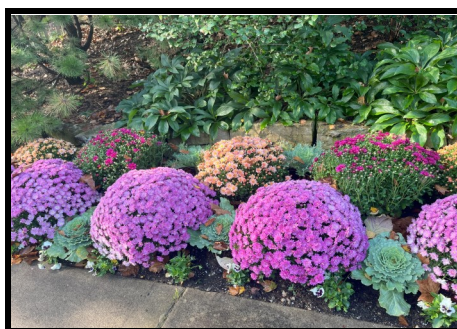
- Lift invasive vegetation or floating native plants and put them on a mulch pile. The removed phosphorous helps to reduce the chance for fall lake algae blooms. The mulch is great garden fertilizer.
- When fall algae blooms occur do not use algicides/ herbicides as they may release toxins from the blue/green algae or cause post treatment blooms.

DOCKS

- Remove temporary docks and buoys. It prevents ice damage.
- On permanent docks customize bubbler operations with times or thermo couplers. Rheostats may be set at half blast so as not to affect other dock areas.



Enjoy the fall as it is the most colorful time of the year.



News Bytes by AnnaMae Bush

Village Manager

Dredging Update - Chris Brown reports that the total yardage dredged was 57,109 cubic yards. This is the most that has ever been dredged from our channel. The previous largest amount dredged was 24,000 cubic yards in 1993. Environment, Great Lakes and Energy (EGLE) decides where to put the dredged sand, and its placement north of the channel this year created a different shoreline. Brown said, "We have requested the option that the next dredging will deposit sand on the south side of the pier." Taking into consideration the amount removed this summer and the date the dredging was finished, it's possible the next dredging may not be needed until 2025.



With preliminary approval already received, Brown expects a formal announcement soon from EGLE regarding our Drinking Water RTF grant of \$2.45 million. "We are moving forward with the assumption all is good. We are excited as this is a major milestone for our Village. The future of a great quality of water for the next seventy-five years is important." Project completion is expected in 2025. The new water line will extend from the new well on Ridge Road down Chester Street and under the channel into the Village center. Brown promised, "We will release all information as it becomes available. The public needs to be well engaged when public utilities are involved."

Coming Soon The Fiesta Grande tortilla chip factory is moving from their current production location in Montague MI. Owned by Greg Vanboxel and managed by Larry Doran, graduates of Pentwater High School, this company is "coming home" and hoping to expand into markets nationally. Now sold in over 200 Meijer stores, Fiesta Grande will put Pentwater on the map with its wonderfully renovated facility in the prior WireWorks factory. In addition to production space, the building will provide retail space and limited residential housing. They are hoping to move in early Spring 2024 and employ approximately 40 persons, most of them coming from the Montague plant.



The Oceana Echo plans to initiate a new magazine publication in Pentwater called **Traditions** that will highlight the many reasons why people return to Pentwater year after year. The first issue will come out this November, and then it will be published monthly starting next May through September.

The recently enacted 2023-2024 Michigan State Budget allocates approximately \$3 million for the geological mapping of groundwater to hopefully enable Michigan to catch up to neighboring states that have been mapping groundwater for many years. Such geological mapping answers questions about the quantity of groundwater available, the presence of contaminants (like PFAS), the likelihood of contaminants spreading, and how much is used for extensive crop irrigation. Recent mapping of Ottawa and Cass counties revealed findings that were the opposite of prior assumptions. Results from the newly funded program will be important for all state residents.

[See related article on back cover.]



Pictured right: PLA Homecoming float 2023

November 2023 – February 2024 Pentwater Events Calendar

Calendar and Event Highlights by Lynne Cavazos

NOTE: Transfer Station will be open for leaves, clippings and brush on Saturdays in November:

11/ 4, 11/11, 11/18, 11/25

Nov 25 Small Business Saturday – Shop Your Local Merchants

Nov 25 Santa Celebrates Christmas in the Village 5pm - 6:30 pm
Arrival of Santa by Pentwater Fire Department

Nov 25 Merchant Open House – Refreshments and Fun

November & December - Christmas in the Village – SIP - SHOP – STAY

Weekends -Thanksgiving to New Years

Dec 2 Pentwater Band Christmas Craft Fair School 9am -3pm

Dec 3 Christmas by Candlelight – Centenary Methodist Church 7 pm

Dec 10 COVE Benefit - Holiday Tea - OCCOA* 1:30-4 pm
(Reservations required – Lynne Cavazos 231-869-5939)

Dec 18 Caroling on the Village Green at 3:00 PM
Centenary United Methodist Church

Feb 10 &17 **Heads Up** Winter Fest - Winter Fest-5K Run, Ice Skating, Sledding, Perch Tournament, Cross Country Skiing & More! *More details in the next newsletter. Or check the Chamber website.*

Feb 17-18 DNR Free Fishing Weekend

* **Check the Pentwater Chamber Website** www.pentwater.org (231) 869-4150) for details and more.

NEW EVENT THIS YEAR:



“Have a Merry Little Breakfast”

Pentwater Community
Christmas Brunch
With Piano music by Betty
Pleva
Bring an egg dish, meat or
pastry to pass
Park Place
December 21st
11AM-1PM



Small Business Saturday - Pentwater

On Saturday, November 25, 2023 support our local businesses by shopping and dining local for Small Business Saturday! Hours may vary by merchant.

Santa Celebrates Christmas in the Village

Enjoy the holiday weekend in Pentwater. The Pentwater Fire Department will continue their tradition of bringing Santa Claus to town. Santa will be escorted to the Village Green Saturday, November 25th at 5PM by Fire Truck. Santa will be available for visits and photos.

Christmas by Candlelight

Sunday, December 3rd at 7:00 PM
The Centenary Methodist Church will be hosting a candlelight service. The musical program will be followed by a dessert table. The Community is invited to attend.

New Year's Eve events

For info on New Year's Eve, please check the Chamber website or call the Chamber office. **Chamber Website**
www.pentwater.org (231) 869-4150





Pentwater Green School



By: Abe VanDuinen

Green Schools Member

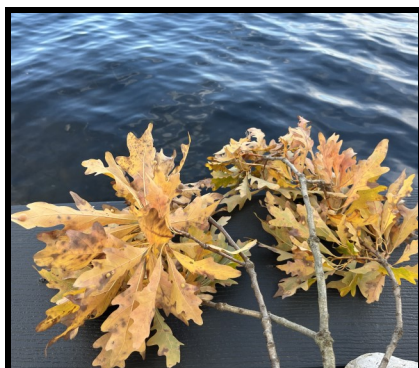
The annual Adopt-a-Beach beach cleanup was another success! Hosted by the Alliance for the Great Lakes, the beaches of the Great Lakes in all eight Great Lake States were cleaned by volunteer organizations. At Pentwater, we participated by cleaning up the shores of the Charles Mears State Park.

After a messy tourist season, the beach is littered with various plastics, large and small, cigarette butts, bottle caps, and more. As Green School members walk down the length of the beach, we pick up all the trash we see, categorize it, and record it on a data card before collecting it in trash bags. As a member of Green Schools for several years, I've had a firsthand look at pollution trends on our beach shore. This year, there was visibly less trash than in previous years, and the data proved that. Consistently, the item we collect the most is plastic pieces. We gathered around 600 pieces this year, whereas the number was over 1000 last year.



NO LEAVES IN THE LAKE! PLA wants to remind riparians not to put leaves in the lake.

Leaves in the lake this fall can lead to toxic blue-green algae blooms next spring.



PENTWATER LAKE ASSOCIATION – “For the Love of the Lake” PO BOX 825, Pentwater MI 49449

Membership Application Date _____ New _____ Renewal _____

Member Applicant Name _____ Spouse _____

Local Address: Street _____

City _____ State _____ ZIP _____

Mailing Address: Street _____

City _____ State _____ ZIP _____

Phone #(s): Local or Home _____ Cell: _____

Email Address: _____

How to send your newsletter: Email _____ Hard Copy via USPS _____

Dues: Yearly Family Membership (one vote), from July 1st through June 30th \$ 30.00

Subscription to Michigan Riparian Magazine, published quarterly (optional) \$14.00 \$ ____.

TOTAL (Make check payable to: Pentwater Lake Association, Inc.) \$ ____.



Pentwater Lake Association Board

- Pat Hooyman—President
- Tom Walter—Vice President
- Beth Provencal—Secretary
- Rich Pugsley—Treasurer
- Joe Primozych George Ritchey
- Lynne Cavazos Dr. Ross Feltes
- Joan Menke-Schaenzer

PLA Newsletter—published 4X/year

- Editor—AnnaMae Bush
- Writers—Board members, guest contributors
- Photographers—Writers, D. Baker, D. Selahowski
- Mailing—Caroline Denlar

PLA Committees and Chairs

- Membership (Pugsley), Natural Resources - (Primozych), Publicity (Hooyman), Social (Cavazos)
- Social Media (Provencal), Water Quality (Hooyman), Education (Pleva), Newsletter (Bush)

Pentwater Village (869-8301)

- President—Jeff Hodges
- Manager—Chris Brown
- Zoning Administrator – Kate Anderson
- Clerk/Treasurer—Rande Listerman
- Deputy Clerk/Treasurer—Barb Siok
- Trustees—David Bluhm, Jared Griffis, Dan Nugent, Don Palmer, Kathy O’Connor

Pentwater Township (869-6231)

- Supervisor—Lynne Cavazos
- Treasurer—Heather Douglas
- Clerk—Maureen Murphy
- Deputy Clerk—Glenn Beavis
- Zoning Administrator – Keith Edwards
- Deputy Treasurer—Deborah Flood
- Trustees—Mike Flynn, Dean Holub

- Fire Chief**—Jonathan Hughart (869-5858)
- Police Chief**—Laude Hartrum (869-5987)
- O.C. Marine Deputy**—Tim Simon (231-873-2121)

Pentwater Lake Association

PO Box 825

Pentwater MI 49449

www.pentwaterlakeassociation.com

Facebook: Pentwater Lake Association



Ground Water Aquifer Depletion Becoming a Significant National and State Issue

by Scott Brown Michigan Waterfront Alliance e - Newsletter Editor

The freshwater that lies beneath the earth's surface that is often referred to as ground water has served as a vital life sustaining resource on earth for millions of years. In the modern era, residents and businesses located a long distance from lakes or urban water systems depend almost entirely upon ground water wells for fresh potable water. In the past one hundred years, however, ground water consumption in many areas of the United States has surged. Simply put, in many areas of the United States ground water is being extracted at rates that Mother Nature in all her glory is not capable of restoring. It is important to note that the United States Geological Survey reports that approximately 10% of the ground water aquifers in the United States fell to their lowest level on record last year.

In Kansas, for example, ground water aquifer depletion has already resulted in a significant reduction in the amount of corn that an average acre is capable of producing. In Michigan's Ann Arbor township, ground water wells serving homes, businesses, and farms are failing at a steadily increasing rate due to the extraordinarily high volumes of ground water that are being extracted by a local aggregate mining operation.

Local governments charged with reviewing permit applications for high volume ground water consumption operations, and local officials charged with making ground water extraction related decisions in lake areas should also be mindful that lower ground water aquifer levels may also equate to lower inland lake levels.

[Excerpts, Used with permission from Scott Brown, September 2023]