

PENTWATER LAKE ASSOCIATION NEWSLETTER

February 2021

INSIDE THIS ISSUE

Committee Reports pp 2-3
Stormwater Pros/Cons p 4
Cohos and Canaries p 5
Waterfront Permits pp 6-7
Calendar pp 8-9
Tundra Swans p 10
News Bytes pp 11-13
Green Schools p 14
Finding Joy - p 15
Membership/Dues - insert



PRESIDENT'S MESSAGE by LYNNE CAVAZOS

WHEN IS IT SAFE TO BE ON THE ICE?

If you are thinking about going out on the ice, how thick does ice have to be to walk, snowshoe, snowmobile, ice fish, cross country ski, skate, or play sports?

Use common sense when going out on the ice. As a general rule, avoid ice that has cracks or breaks and ice that is near inlets or moving water. If you're not familiar with an area, be sure to talk to the locals because ice is rarely the same thickness all the way across a body of water and can change.

If you're going out on the ice, it is always a good idea to check with a local expert about ice safety. Bait shops, lakeside businesses, local police departments often know the ice conditions in their area. Always be safe and don't put yourself or others at risk.

Before you go out, check **ice thickness chart** and **ice color** to determine if it's safe!

ICE THICKNESS CHART

Ice Thickness	Permissible Load
3 inches	Single Person on Foot
4 inches	Group in Single File
7.5 inches	Passenger Car (2 ton gross)
8 inches	Light Truck (2.5 ton gross)
10 inches	Medium Truck (3.5 ton gross)
12 inches	Heavy Truck (8 ton gross)

How to check ice thickness?

With a drill, make a hole in the ice. Hook the end of a tape measure on the edge and take the measurement. If unsure about the consistent thickness on a body of water, you may want to bring an ice auger to test the ice as you walk and move. Be especially cautious, if there is a "bubbler" near a dock along the edge of a lake.

Know your Ice Color Meanings:

- Light gray to dark black - indicates melting ice - weak density (not safe).
- White to Opaque - water-saturated snow on top of ice - usually weak and porous.
- Blue to Clear - high density, very strong - safest ice.
- Mottled/Rotten - not so much color but texture - thawing & slushy (not safe for footstep)

WARNING: Always be cautious. If you are unsure if the ice is safe, don't take your chances!

Exercise extreme caution when using vehicles on ice. Ice needs to be at least 8 inches thick to hold a small pickup truck. Park cars at least 50 feet apart and move cars every couple hours. Drive at a very slow speed with seatbelt off and door unlocked. Always bring safety gear: A life jacket, ice pick, cell phone, length of rope, and ice auger. [Reference: Old Farmer's Almanac (2019) & www.wikihow.com/Know-When-Ice-is-Safe]

COMMITTEE REPORTS

Social Committee Report: Lynne Cavazos

With all the efforts to get the COVID 19 Pandemic under control, we are hoping that our two major social events hosted by the Pentwater Lake Association (PLA) can be held. We will keep you updated on our progress.

Please SAVE the dates:

- Annual PLA meeting and Social - Friday, 6/25/21
- Strawberry Shortcake Social Fundraiser (Pentwater Homecoming) - Thursday, 8/13/21

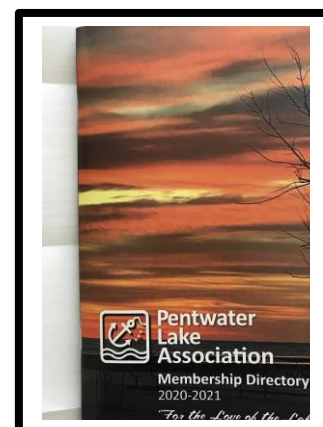
Membership: Rich Pugsley

This is a great time of the year. The lake puts on its coat of white and shines and sparkles. Plus this is the time of year when my favorite phone book arrives in the mail. You get the white pages and the yellow pages, but my favorite is the friend pages. Otherwise known as the Pentwater Lake Association Directory. A reminder of all of the great people that contribute to our association. We have added some new names this year. We have also lost some who went in a different direction, or moved away, or passed away, some due to COVID-19. But as the directory reflects, we are still strong and stronger together.

PLA Directory - 2021

The 2021 Directory was mailed out to members in January. If you did not receive your directory, please contact Lynne Cavazos (Home Ph: (231) 869-5939; Cell/Text: (805) 705-5846; Email: lcavazos5939@charter.net).

Please contact George Richey (georg421@charter.net) or Lynne Cavazos (lcavazos5939@charter.net) if any changes need to be made to your address, email or phone number.



[PLA Website - PentwaterLakeAssociation.com](http://PentwaterLakeAssociation.com)

Be sure to visit the PLA website for information about our mission, events, membership, past newsletters, links of interest, and photos from the 2020 Youth Fishing tournament.

Natural Resources Committee: Joe Primozych

On January 18, the lake water levels were down 12 inches from the summer high. The snowfall was behind the annual average by 35 inches both here and in the Lake Superior area. The forecast looks good for this year's water levels to recede moving forward. Warmer weather this winter has kept our lake ice at 1 inch or less as of today. Because both boat launches are free of ice at this writing, boating now is an option for perch fishing the western basin. With a third of the lake open, the Winterfest could cancel its Ice Perch Fishing Tournament. The past three months are like last year and show no significant run of big lake perch into Pentwater Lake. The DNR Fishery says that is not the case in lakes from Muskegon south.

Publicity Committee: Patrick Hooyman

The committee is working on improving the use of the PLA Facebook page.

Water Quality and Water Levels: Mike Peters

Water Quality

In 2020 Pentwater lake and tributaries were sampled on four monthly occasions: June – September. As has been the tradition for several years, the samples were analyzed for eight water quality parameters. The results for seven of these tests indicated a high quality of water! These results were consistent with several past years' results.

However, E. coli test results from the contributing tributaries of the North and South Pentwater Rivers and the Village Creek were, on occasions, well above recommended levels. Historical levels of E. coli have indicated occasional similar extremes but not to the levels experienced in 2020. (See Tom Walter's following article on Stormwater.) It is **very** important to note that even with these E. coli contributions, the lake has **consistently** tested extremely low for E. coli – often below detection!

Lake Levels

The US Army Corps of Engineers (USACE) latest 2020 results and 2021 forecasted levels for Lakes Michigan-Huron are trending toward lower water levels which means the same for Pentwater Lake. The latest results are actual recordings for December 2020 and indicate a drop from of about 5.5 inches from December 2019. The most current water level estimates from the USACE through May 2021 are a drop of 5.5 inches from May 2020. The 2021 forecasted water levels are tracking very closely with the actual 2019 levels. While we might be tracking toward lower water levels, they are likely to remain a challenge for 2021.



Stormwater - the Insidious Polluter: Tom Walter

Doesn't everyone like a summer thunderstorm? They are dramatic. They are visual with ominous black clouds and wild lightning with heavy downpours. Thunderstorms are often brief and local, affecting one watershed or another. Other rain events, like a long steady rain over a few days, can send down a lot more water over a much larger area. Both events produce stormwater runoff.

Eventually the water disappears and life carries on. But what happened as a result? A lot of good things happen. Water is a building block of life. Crops get watered, dust gets abated, pollen is reduced, plants and everything else get a drink and get washed off. Pervious earthen surfaces allow water to enter our water table. But what happens to the water that runs off? It actually produces some insidious effects.

Water that lands on an impervious surface either evaporates or moves to a lake or stream, or makes its way to a pervious surface and soaks in. But as water makes its way to a lake or stream it brings a lot with it. After it rains, look at all the debris on the sewer grates (see photo) in the Village. Where does that stuff go? It goes right into the lake. You can see it in what shows up on the beach. Cigarette butts, cigar tips, bottle caps, organic detritus, are some of the obvious things. Motor oil, rubber, anti-freeze, pop, coffee and milk are some less obvious things. None of it belongs in the lake we love.



Roads that descend into a river valley shed water and channel it into the river or an adjacent wetland quickly. In addition to all the "stuff" that gets washed in, the rapid addition of water raises water levels quickly. Fast water erodes roadside ditches that add a lot of sediment. Rising and high water erodes stream banks adding sediment. But that is what estuaries like our Pentwater Marsh are for. They capture sediment and grow things on it. However, our marsh is capped by Longbridge Road so it fills a little faster rather than spreading the sediment out.

Having an interest in our water quality, the Pentwater Lake Association (PLA), collects water samples during the summer months. Those samples are sent to the Grand Valley State University Water Resources Institute for analysis. The samples are taken from Pentwater Lake (2), and 1 each from the North Branch and South Branch Pentwater River and 1 is taken from Village Creek. Most of those samples show good water quality without much variation and little change over the years. Those are good things. There is one anomaly that is worth mentioning and curiously enough appears to be stormwater related. After a summer high water event, high levels of E. Coli bacteria are detected in our sample of the North Branch of Pentwater River. It quickly returns to non-detectable levels in the river as high water recedes, but for a short time, kayakers should avoid swimming in the river. **Most importantly** the bacteria harmful to humans has never been found in the Village Creek or Pentwater Lake samples.

Make no mistake. Stormwater pollution is a challenging issue to solve. Stormwater sewer infrastructure is firmly in place and difficult to change, as are roadside ditches. But changes can be made when opportunities arise. Retention basins and storm water filters are two possibilities. Do your part with proper disposal of cigarette butts and plastic. Pick up what you drop and pour out leftover beverages on a pervious surface. Increased E. Coli levels are amongst numerous things that make Stormwater an Insidious Polluter.

WHEN IS A COHO SALMON LIKE A CANARY?

The December 3, 2020 issue of the Los Angeles Times carried a fascinating article written by Rosanna Xia, a staff reporter on the environment. She covers stories on the west coast and was a Pulitzer Prize finalist in 2020 for explanatory reporting.

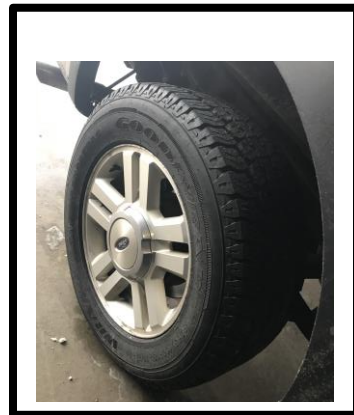
Her story summarized 20 years of research on mysterious coho salmon kills occurring on the West Coast from Northern California to British Columbia. Similar to the canary in the coal mine, coho salmon have been singularly indicative of watershed contaminants. The phenomenon predictably happened after heavy rain events, sometimes decimating an entire population of coho salmon in a creek, yet the reasons were elusive. After two decades of testing, biologists and toxicologists had ruled out pesticides, disease, high temperatures, low dissolved oxygen, and other possibilities. Scientists in the Puget Sound looked for location patterns, comparing water sources from crystal clear creeks to urban streams. They discovered that creeks in highest traffic areas were hardest hit. They surmised it could be related to tires and stormwater runoff. Further testing revealed that tire fragments left in room temperature water for 24 hours shed 1500 to 2800 different chemicals. These chemicals were sub-divided multiple times and the powers of deduction pointed to one mysterious chemical. This chemical was related to a preservative applied to tires.

The mystery went deeper. It was only when tires with this preservative hit the road, the mysterious

by AnnaMae Bush

chemical reacted with ozone gas to transform into several other new chemicals. One of those new chemical compounds proved to be highly toxic to the coho salmon. The substance caused the fish to breathe erratically, then spiral until they hit the stream bottom where they stopped movement and expired. The Puget Sound discoveries led to

confirming test results in Los Angeles and San Francisco. A California researcher named Rebecca Sutton reported finding a variety of tire rubber chemicals in San



Francisco Bay. She “was surprised to find that tire particles were by far the largest source of micro plastics in the bay.” She asserted these recent findings illustrate that driving not only pollutes air and changes climate, but also can harm wildlife. That is a heavy thought, full of possible implications. Might there even be an implication for the proximity of Monroe and Longbridge Roads to our lake?

The good news is that knowing how toxic one particular chemical is, means industrial scientists can work to eliminate its use and find a harmless substitute. Let’s hope that happens!

Planning Your Waterfront by Rich Pugsley

If you are hoping to make some changes on your waterfront this summer, this is a good time to start thinking, planning, and taking action for any waterfront structures you hope to enjoy on your Pentwater Lake property. These structures can be docks, hoists, rafts, seawalls and buoys both permanent and temporary. This article provides some of the information you will need to make your plans a reality.

The first question is, do you have the right to build a structure in the lake? The answer is “yes” if you have riparian rights and sufficient waterfront. Pentwater Village and Township Zoning Ordinance 3.32 - Riparian Access defines

the requirements for a property owner to have a structure in the lake. The requirement is to own at least fifty (50) feet of lake frontage for each private dock or structure utilizing or accessing the lake.

The second question is, do you require a permit? The answer is “yes”, whether the structure is permanent or temporary. Because Pentwater Lake is part of the Great Lakes waterway, it requires a permit from the US Army Corp of Engineers (USACE). Any permanent structure also requires a permit from the Michigan Department of Environment, Great Lakes, and Energy (EGLE).

Fortunately in recent years, the USACE and EGLE have developed a Joint Permit Application (JPA) that can be accessed, completed, and submitted online. The Water Resources Division (WRD), within the Department of Environment, Great Lakes, and Energy (EGLE) has the statutory authority of Part 301, Inland Lakes and Streams, to regulate this activity. USACE has authority under the Clean Water Act. To simplify things a JPA can be submitted to both. Search for EGLE/USACE Joint Permit Application under MiWaters. The fee for a family dock is typically \$50, but the reviewer of your submission will notify you if a larger fee is necessary. A permit compliance certification letter is also required from you upon completion. A permit is typically good for 5 years so save your work for the next time.

When completing the application there are multiple categories to choose from for your project. Two typical categories (can normally be combined on the same application) are:

1. Recreational Facilities - This includes docks, hoists and rafts
2. Mooring Buoys - This includes a mooring buoy

Guidelines to consider when planning your structures.

1. Any structure must not restrict the riparian rights of your neighbors. Stay away from property lines, especially with a floating structure that will move in the wind.
2. Do not create a navigational hazard. The DNR can remove any structure deemed to be a navigational hazard.
3. EGLE requires that a dock have no more than 120 square feet of surface area.
4. Use materials that are non-polluting.
5. Do not restrict the flow of water or natural movement of aquatic life.
6. A mooring buoy must meet all relevant United States Coast Guard requirements and the requirements of Part 801, Marine Safety, of the NREPA.
7. A mooring buoy must be marked with the EGLE and USACE file numbers.
8. Bubblers are not mentioned in the regulations, but it is recommended to include them in the permit if you plan to use them. If used, it is also recommended to display a seasonal sign to warn ice fishermen of a bubbler in the area.
9. Any structure will carry with it the possibility of liability. Consider your insurance options.

The application requires the following types of information.

1. Survey showing distances from neighbors' properties.
2. Background information on the property.
3. Project plans with drawings of structures with dimensions: top view, profile, cross-section
4. EGLE Contact - For Pentwater Lake this is currently Joshua Crane out of the Grand Rapids EGLE Water Resources Division. His email is cranej3@michigan.gov

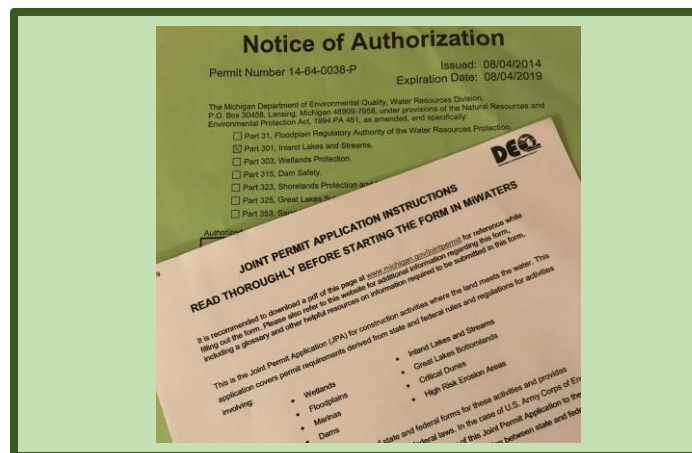
THE D.I.Y. CHALLENGE: My Personal Experience Filing for a Permit by AnnaMae Bush

High water levels last summer prevented our family from installing and using our dock, so the boat stayed in our pole barn. We decided to pursue installation of a permanent dock before summer 2021...definitely not something we could do ourselves. Anyone who has done any shoreline work such as a seawall or permanent dock or adding rip-rap or boulders to stop erosion, knows that permits are required. Permits from the DEQ (now called EGLE) and/or the Army Corps of Engineers, can take many months for approval. In addition to completing complicated documents, there are fees involved. Sometimes the contractor for the work will file for any required permits; other times the property owner is expected to file for the permits. The fees range from \$50 for a simple project to thousands of dollars for projects that require notifications to nearby property owners or that entail soil removal or addition of fill. Not knowing ahead of time what the fee will be, a contractor will charge a flat fee for permit applications. The property owner could end up paying more than EGLE charges the contractor for the permit. I decided to tackle filing for the permit myself.

I went to the EGLE website and found a document called Joint Permit Application with 35 pages of instructions to read prior to starting the application in MiWATERS. Even with all the instructions, videos

and examples, it was no “piece of cake” to complete the 15 pp long permit application. Multiple menu pull-down options led to further questions with each option. Perhaps the biggest challenge for me was providing drawings to scale of the proposed construction, including multiple measurements, from three perspectives. Drawings looking down on the dock, showing a profile from the side, and showing a cross-section with materials and dimensions were required. I had to know accurately what the contractor would be doing. Another challenge was determining the ordinary highwater mark for the dock’s location. I contacted EGLE’s office twice with questions and contacted the contractor once with questions. The hours I spent on it really piled up. But now that I have a receipt from EGLE for both my application and the general fee, I have a huge sense of relief and satisfaction. Now I simply wait and hope for approval. If I could do it, YOU can do it too!!

Processing a submission can take 30-90 days. The reviewer will notify the applicant if any additional information or fee is needed, whether the request needs to be reviewed by another agency or if neighbors need notification. If a public hearing is held, the process will take longer. When all requirements are met, a decision will be made and sent to the applicant.



Winterfest in Pentwater - 2nd & 3rd Weekends of February

Get your “freeze on” in Pentwater this February. Many activities are scheduled on February 13th & 20th for you and your family and friends.

Get rid of your winter blues and come enjoy Pentwater's annual Winterfest. Local residents and visitors come to enjoy the annual two weekend Pentwater Winterfest designed to promote wintertime activities in the Pentwater area. While the traditional Winterfest activities may look different this year, there will be some winter fun in store! Local shops and restaurants will be open for you to enjoy!

Friday, February 12th

NEW Pentwater Ice Skating Rink 3-6pm FREE (repeats on Saturday, February 13)

With the help of the Pentwater Fire Department an Ice Rink has been created for the public to enjoy. Grab your skates and go to the North End Park (basketball court on the north end of Wythe Street) for an evening of ice skating.

There will be (COVID safe) refreshments and snacks for purchase. Ice Skates are NOT available for rental this year so please bring your own. All participants are required to wear a mask.

NOTE: The Chamber is continuing to collect ice skates! If you have any skates you are willing to donate please contact the Pentwater Chamber of Commerce.



Saturday, February 13th

2021 Snowman Scram 5K and 1 Mile Fun Run

The 1-Mile Fun Run starts at 11:00am with the 5K Run/Walk to follow. Same day registration will be at the Bus Barn starting at 9:30am. The Start and Finish will be at the bus barn/track at the school (Virtual is also available) FEES: \$15.00 for 1 mile Fun Run and \$25.00 for 5K run/walk (virtual too) Register online at:

<https://runsignup.com/Race/MI/Pentwater/SnowmanScram1MileFunRunand5KRace>

Pentwater Pathways Open* 1-3pm FREE

The public is invited to use OCCSA's adult and children's ski equipment by making advance reservations at occskia@gmail.com. All participants are required to wear a mask when trying on equipment and returning it after skiing. All children must be accompanied by an adult who will assist them in putting on equipment and skiing with them. REMINDER- PARKING AREA on Railroad Rd. at the end of Jackson Rd. For ski and trail info visit www.oceanaski.org

*Weather dependent- If there is no snow, event will be moved to the following Saturday (1/20/21).

Free Fishing Weekend February 13th & 14th

SLEDDING: All Day on the Village Green –

Bring your family and friends.



Saturday, February 20th

11th Annual Ryan Williams Perch Tournament 7am to 4pm

Event day registration is 7am to 10am at Pentwater Convenience Center or Port View on Hancock St. The fee is \$10 per adult or \$5 per kid (15 or younger).

100% Cash and Prize payout for 1st, 2nd, and 3rd place prizes. The final weigh-in will be at Port View no later than 4pm. For more information, please contact Pentwater Convenience Center 231-869-4203 or Ryan Williams 616-617-7984.

NOTE: Due to COVID 19 organizations hosting the following events have made the difficult decision not to participate in this year's Winterfest. This decision was made with the health and safety of the community in mind.

- The Polar Plunge
- Two Town Tasting (Hart and Pentwater)
- Collen Plummer Beer and Music Festival hosted by C.O.V.E.

March - 2021

Celebrate St. Patrick's Day this year with a Scavenger Hunt! The Chamber will be hosting an Adult Scavenger Hunt this year that will take place at local establishments throughout the Village. This event is for participants 21 years old and up. Get your team together and be ready for some fun! The Scavenger Hunt will begin at 1PM! Check the Chamber Website for more information. www.pentwater.org or www.visitpentwater.com/calendar.php

NOTE: The Chamber continues to evaluate how day to day changes in COVID-19 will impact this event and future events. Therefore, we are proceeding with caution for the safety of the public. Please continue to check back or visit the Pentwater Chamber of Commerce social media channels for event related updates. All event updates are being made on a month-to-month basis.

April - 2021 Colleen Plummer's Easter on the Green *Grand Sponsors: Antler Bar and Ludington Beverage Co.*

Easter on the Green will be celebrated from Noon - 1:00 PM on the Village Green and in Downtown Pentwater. Bring your children and family to the Village Green to meet the Easter Bunny. Be sure to stay and enjoy all the festive events: an Easter Egg Hunt, Easter Bonnet parade and contest, musical chairs, face painting, and games.

NOTE: Please continue to check www.pentwater.org/calendar/ or the Pentwater Chamber of Commerce social media channels for event related updates, which will be made on a month-to-month basis.

EDUCATIONAL OPPORTUNITIES

Ice fishing class offered in Cadillac MI

Hard Water School, a one-day introductory class on ice fishing will be offered on Saturdays, February 20 and March 6, at the Carl T. Johnson Hunting and Fishing Center in Mitchell State Park, Cadillac. It will focus on techniques for pan fish, walleye and pike. Topics covered will be how to set up equipment, where and when to fish, safety on the ice, and rules and regulations that apply. The cost of \$35 includes individual instruction from a pro, lunch, bait, and a goodie bag. Class size is limited to 20, and COVID restrictions will be followed. For more information and to register, go to Michigan.gov/OutdoorSkills. Contact Ed Shaw at 231-779-1321 with any questions.

NotMISpecies webinar series (online at the NotMISpecies website. Questions? Call Joanne @517-284-5814)

The Michigan Invasive Species Program webinar series returned last month. This live, monthly series presents people who are frontline responders to various invasive species who share their work with non-native plants and animals that pose environmental threats. January had a presentation on "Hemlock Woolly Adelgid." The 9am February 16 presentation "Ahoy, Boaters" will look at aquatic invasive species and identify programs to prevent their spread. Join the March 25 presentation, "Why Spotted Lanternfly?" at 9am to learn about one of Michigan's newest invasive pests. And on April 20 at 9am, a presentation "Not in MI Waters" will look at early detection and response to water invasives named European frog-bit, parrot feather, and other recently introduced species.

Return of the Tundra (Whistling) Swans: Joe Primoich

The year 2020 was unusual in a lot of ways and that includes the return of the migrating Tundra Swans to Pentwater Lake. Locals had their eyes to the sky since October looking for the noisy migrating birds. Their loud whistles and honks can be heard for up to two miles before they can be seen above you. Since last year over 150 swans arrived at the end of October before an early freeze, the same was anticipated this year. This year's weather has allowed the swans to linger and choose alternate routes along the shores of Lake Huron. Four flocks up to 50 in size were reported around midday in the last two months of the year, but continued on their way before finding a resting spot. The Hudson Bay birds are known for migrating in a hopscotch pattern. Finally on January 8th, Friday, at 5:30 pm a small flock of 19 tundra swans were spotted by Brian Schaezner. The Tundra Swans were noisy in circling and landing in family groups of 4 to 6 birds. Parents were calling to their young to not overshoot the open water in front of the river mouth at the east end of the frozen lake. The flock was seen moving south low over Bass Lake that day, but continued toward Pentwater as Bass Lake was totally frozen. The swans joined the waterfowl feeding before dark and then bedded down on the edge of the frozen ice. The next morning, under freezing conditions, the swans were reluctant to leave and waited till the temperature got near freezing and then by signal of the leader, lifted off into the south wind. Then they turned up the lake to give one fly by for those of us watching as they headed out to the Lake Michigan shoreline and turned south. With luck the flock will make it to Lake Erie on the next leg of their flight to eventually winter in Chesapeake Bay. So thanks to Brian Schaezner for letting us know our visitors had arrived - he is the winner this year of the eyes in the sky Tundra Swan competition. *Question: How can you tell tundra swans apart from our resident mute swans?*

First, tundra or whistling swans have a yellow dot less than one inch on the upper part of their black bill while invasive mute swans have a raised orange area at the upper part of the black bill. Secondly, mutes carry their head in a curved neck pattern while tundra swans carry their head with a straight up neck position.

Bobbers to Bucks by Joe Primozech

The outdoors in Michigan has allowed Michiganders to take up activities that are the perfect antidote for this season of Covid concerns. The activities include fishing in the spring and summer and hunting in the fall and winter. These outdoor activities put participants in touch with nature and can provide a relaxing setting. With fresh air and safe distances followed while with family, the spread of infection is avoided.



Since there are higher levels of oxygen around bodies of water and the activities outdoors tone up your body core, these two factors improve your health levels. In addition, meals of fresh catch and low-fat venison are perfect recipes for developing a healthy heart and digestive system. Remember when making your plans to involve the grandkids. It is a bonus when they can ask, "When are we going again?"



News Bytes by AnnaMae Bush

Downtown Changes

Cheri Petri Gallery has moved from 226 South Hancock to Cheri's building on Second Street across from the Green.

Jilly's Gallery moved from 478 South Hancock into Cheri Petri's former space at 226 South Hancock. Jilly says, "I feel like I'm at home, like I've always been here." Her store is now open every Friday – Saturday, 10-5, or by appointment. She is ready to teach classes for anyone who is interested. Call her at 231-869-2100 to set one up!

Port View Beer and Wine has added some fresh breakfast foods including Sanders meats, eggs, cheese and milk. Ryan and Lissa Williams encourage residents to drop in and discover what else is new in their expanded beer and wine departments. Ryan reports "We now carry fresh flowers for your table and special events. We have roses coming in for Valentine's Day." Great news for any of us who tend to forget important dates.

Brian Prescott, owner of Green Isaac's Coffee Shop, has become the newest member of the Downtown Development Authority. He reports, "After opening *Green Isaac's* last July, we were able to find a home within walking distance to the shop, the school and the beach -- and we're already loving our new life in Pentwater...so we wanted to find ways to give back to the community, and I felt that joining the DDA Board was a good place to start!" It is good to see residents participating in civic activities and organizations so soon after their move to Pentwater.

Michele Anscombe has moved her Painted Frog art studio from 42 W. Second Street to a much larger space on Hancock Street. She now occupies the building that formerly housed The Bitchin' Kitchen, 320 S. Hancock. She is delighted to have more teaching space and more gallery display space. She has a "Frog Leg Art Bouffet" for kids to enjoy this summer. She is now open Saturday 11-5.

Pentwater Village and Township Facility Updates

Township offices have already moved into the former medical office of Dr. Alan Nelson at 500 North Hancock Street. Winter tax bills can be paid to the Township Treasurer, Heather Douglas, at their new location. Extensive interior building remodeling work was completed in a timely manner, enabling the move to be made the week of November 16. The new building gives each staff member an ideal workspace and provides a conference area for Township Board meetings. The lower level includes a small kitchen and provides maximum storage area for Township records.



Lynne Cavazos, the new Township Supervisor, says, "Offices were designed to accommodate the furnishings from our former building, which helped to insure efficient use of space." Competition for parking at the new location will be reduced significantly by the absence of businesses, store employees, residents, downtown visitors and

tourists. The ramp installed for former medical patients assures accessibility as well.

Village offices are still at the old location while numerous changes are made to the former Huntington Bank building on Hancock Street. It has been interesting to watch the external shape change



with the addition of a clock tower on the roof and the addition of a garage in the former parking

lot. Interior alterations are proceeding to efficiently serve both the Village staff and the Pentwater Police Department. Village Manager Chris Brown is hopeful the Village staff can move into their new facility on February 23, with the police following soon afterward.

Both the Village/Township office building and the police/chamber building will be advertised for public bid with an April 5 deadline to submit. Brown said, "For details and accurate information, residents should look at the bid packet that spells everything



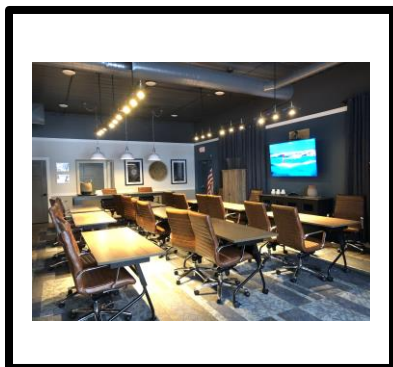
out. They can go to either the Village website or the

Township website." Selling the buildings would return them to the tax rolls.

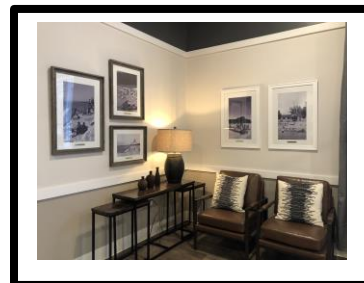
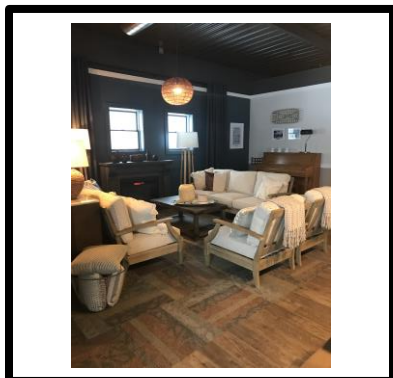
New Community Center – Park Place

The building known as The Friendship Center, next to the library, has undergone extensive remodeling. Newly named Park Place, it will serve the community in a number of ways. “Its use is limited only by the imagination,” Claudia Ressel-Hodan thinks. Multiple surveys revealed residents’ desire for a large, hospitable gathering space for community events, for family celebrations, for civic organizations, and public meetings. The interior has been redesigned to host groups of varying sizes simultaneously. Technology has been greatly updated. At one end of the space, the installation of a fireplace and comfortable seating provides an inviting conversation area for individuals and small groups. An open dining space separates the living room from a meeting space. This space offers a long conference table and moveable glass doors that can open to form one large open area.

Wherever one looks, there is evidence of a talented designer. Colors and geometric patterns are repeated in a variety of the elements – the furniture, the floor, the art on the walls. “Steve Bass deserves credit for the design,” Claudia Ressel-Hodan told me. She and Steve spearheaded the project. Many volunteers helped bring the vision to reality and Claudia’s major role in the project was to keep it moving forward. It is a truly beautiful space and I cannot wait to use it. The walls are filled with a photo history of Pentwater. As soon as COVID restrictions will allow it, the public will be invited to come in...for coffee (free!), to sit and read or knit, use the WIFI or socialize, or attend a meeting. The space can be rented for personal events for reasonable fees that are listed on the Village website. I envision that the library, community garden and Park Place will create a magnet for community fellowship and spawn many wonderful memories. A BIG thank you to everyone who contributed discounts, furnishings, funds, and volunteer time to provide this special asset to our community.



Photos by A. Bush and C. Ressel-Hodan



Pentwater Green Schools Club



By: Shelby Brown



A few of the Pentwater Green Schools Club members recently picked out some books about environmentalism to donate to our school's library! The books that were donated are:

- My Friend Earth by Patricia MacLachlan
- Let's Save Our Planet by Jess French
- Hummingbird by Nicola Davies
- Paper World: Planet Earth by Templar Books

The books will be available for students to check out and read whenever they may please!



Green Schools Club Members Justine and Gracie
giving our librarian Mrs. Quinn the new books!

Finding Joy by Tom Walter

Finding joy is a little harder nowadays. Everyone is pretty much hiding out from COVID to minimize their exposure. We are also under the “long gray beard of winter.”

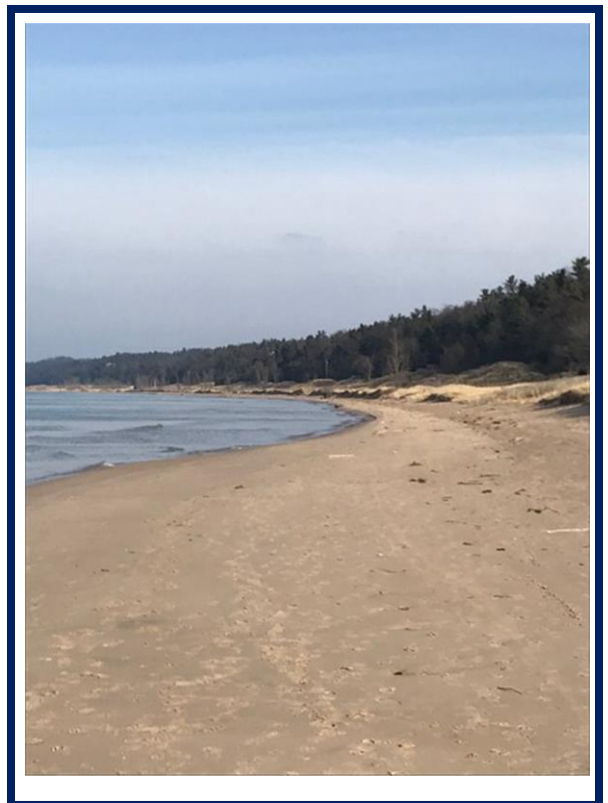
There is joy to be found though, right in front of us in our winter wonderland. Today Mother Nature provided me a first. I was at the channel near the east end and was greeted with what sounded like tinkling chimes you might hear in a garden. There were big roller waves coming in from the big lake. There was an aggressive outgoing current transporting a channel full of small, 3’ and less, pieces of thin ice. They were rolling up and down, banging into one another and tinkling. It was a heavenly sound coming from “the long gray beard of winter.” And there was more....

Big flocks of Goldeneye and Common Merganser ducks are finding our open water. The Redheads have moved on. Mallard flocks are substantially smaller. And the Old Squaws (Long tailed ducks) were here in early November. I was out Lake Trout fishing on a rare calm day and saw them. Hundreds and hundreds flying low, camouflaged by the horizon as far as I could see north and south. More than I had ever seen, and to think they came here all the way from the shores of the Arctic Ocean. What a treat to see them!

Until now this winter has been warmer with much less snow than “normal.” Don’t we all wonder what “normal” really is? The winds have had lower velocity. Though the skies are gray, walks on the beach are wonderful. Walking is easy because the sand is hard and frozen. Eagles soar along the shoreline dunes. There is another spark of joy. Walks on the beach in the middle of winter.

Another day the eagles, one adult and two young ones, were sitting on the ice. So were the crows. They looked like they were drinking water from melted ice. A small flock of tundra swans visited overnight in early January. I saw them flying low and disrupted along the beach, not in a nice V at high elevation. They settled down in open water off Longbridge.

That’s what we do in Pentwater in the winter. We get out there: to the beach, the dunes, the woods, the ski trails. Occasionally the dark skies part and shed sunlight on our picturesque village. That brings a smile and another spark of joy. You won’t see anything if you don’t get out there. There really is a lot to see. You will find something beautiful that gives you a smile and that moment of joy.



Pentwater Lake Association

PO Box 825

Pentwater MI 49449



Ice Fishing January 25, 2021

HELLO!! WE ARE OPEN FOR YOU!! Normal Hours: *

Port View

Sun-Thurs 11-6, Fri & Sat 11-7

Green Isaac's

Daily 7:30-3:30

Toy Box

Thurs-Sat 10-5, Sun noon-5

Pentwater Fair Trade

Sat 11-4

Sew Let's Be Quilty

Tues-Fri 11-5

Good Stuffs

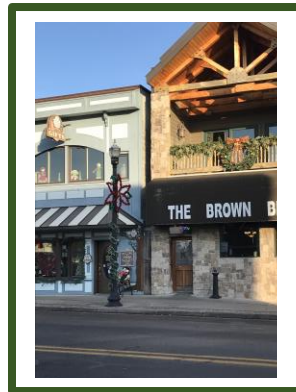
M-W-Th-F 9-2, Sat-Sun 9-3

Studio 161

Fri & Sun 11-3

Birch Michigan

Thurs-Sun 11-5



Brown Bear

M&W 4-8, Th&Sat 11-8, Sun noon-8

Jilly's (by appt)

and Fri-Sat 10-5

Lakeshore Salon

By Appt

Salon 240

By Appt

Bella Design

By Appt

Cosmic Candy

Pick up by Appt

Everest

By Appt

Storybook Village Th-Sat 10-4, Sun 11-2

***SUBJECT TO CHANGE**



PENTWATER LAKE ASSOCIATION

"For the Love of the Lake"

P.O. Box 825, Pentwater, MI 49449

www.pentwaterlakeassociation.com

Membership Application Date _____ New _____ Renewal _____

Member Applicant Name _____ Spouse _____

Local Address: Street _____

City _____ State _____ ZIP _____

Mailing Address: Street _____

City _____ State _____ ZIP _____

Phone #(s): Local or Home _____ Cell: _____

Email Address: _____

How to send your newsletter: Email (in Color) _____ Hard Copy via USPS (in B&W) _____

Dues: Yearly Family Membership (one vote), from July 1st through June 30th \$ 30.00

Subscription to Michigan Riparian Magazine, published quarterly (optional) \$14.00 \$____.

TOTAL (Make check payable to: Pentwater Lake Association, Inc.) \$____.

Pentwater Lake Association Board

Lynne Cavazos – President

Patrick Hooyman – Vice-President

Betty Pleva – Secretary

George Richey – Treasurer

Rich Pugsley

Mike Peters Dan Selahowski

Joe Primozech Janet Strahan

Beth Provencal Tom Walter

PLA Newsletter – published 4X/year

Editor – AnnaMae Bush

Staff Writers – A. Bush, J. Primozech, M. Peters,
T. Walter, R. Pugsley, L. Cavazos, P. Hooyman

Mailing – Caroline Denlar

PLA Committees and Chairs

Membership (Pugsley), Natural Resources –
(Primozech), Publicity (Hooyman), Social (Cavazos)

Website (Richey), Water Quality (Peters)

Education (Pleva), Newsletter (Bush)

Pentwater Village (869-8301)

President – Jeff Hodges

Manager – Chris Brown

Zoning Administrator – Keith Edwards

Clerk/Treasurer – Rande Listerman

Deputy Clerk/Treasurer – Barb Siok

Deputy Clerk/Treasurer – Kate Anderson

Trustees – Michelle Angell-Powell, Pam Burdick,
Jared Griffis, Dan Nugent, Don Palmer,
Dr. Claudia Ressel-Hodan

Pentwater Township (869-6231)

Supervisor – Lynne Cavazos

Clerk – Sue Ann Johnson

Treasurer – Heather Douglas

Trustees – Mike Flynn, Dean Holub

Police Chief – Laude Hartrum (869-5987)

Fire Chief – Paul Smith (869-5987)

OC Marine Deputy – Tim Simon (231-873-2121)